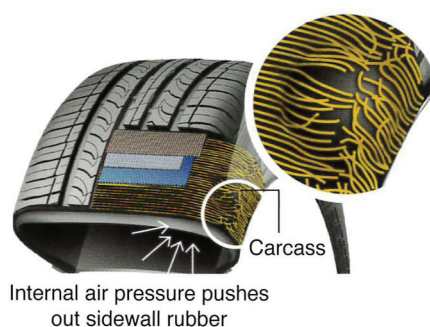


# Sidewall Cord Impact Break (Bubble)

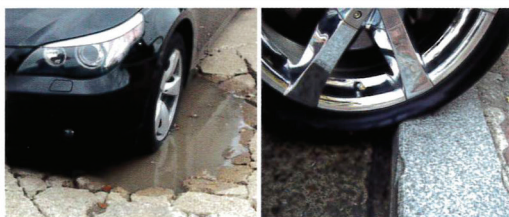


## What is Cord Impact Break?

The carcass contains textile cord topping layers between steel belt and inner liner. If the textile cords of carcass are damaged due to sudden impact with a road hazard or a pothole, the sidewall of tire may arise like bump. This is why the internal air pressure pushes the surface through the gap in the cord. This is called Cord Impact Break(Bubble).



### Possible Causes



Impact damage such as curb / pothole

### Result



Localized protrusion in the sidewall

## How to prevent

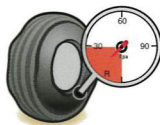
Avoid tread surface cuts and pothole impact if possible.



Drive on harsh bumpy road at low speed.



Maintain proper tire inflation pressure.



Check the tire for damage frequently.



Avoid contact with curbs.



Low profile tires may be more susceptible to this condition.



**⚠ It is very dangerous to drive in the condition of cord impact break.**



# NEXEN TYRE

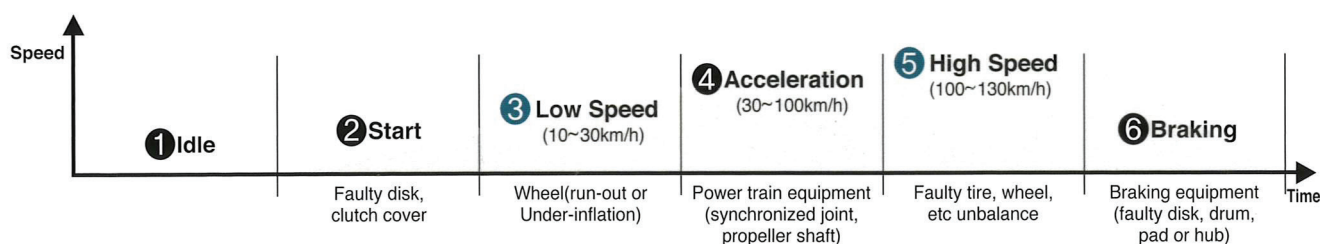
Ph: 0800 621 233 | [nexentyresnz.co.nz](http://nexentyresnz.co.nz)



# Vibration Causes Depending on Speed



This explains the major factor of ride disturbance issues **based on driving speed and parts of vehicle.**



Speed Vehicle part	1 Idle	2 Start	3 Low Speed	4 Acceleration	5 High Speed	6 Braking
<b>Vehicle</b>	Engine	Clutch Disk	Wheel Alignment	Power Train part	Wheel Alignment	Disk
	Trans-mission	Clutch cover	Steering column	Engine Mount	Steering column	Drum Hub
	Clutch cover	-	Suspension	-	Suspension	Brake pad
<b>Tire</b>	-	-	Irregular Wear	-	Irregular Wear	-
	-	-	Out of Round(Balance)	-	Out of Round(Balance)	-
	-	-	Flat Spot	-	Flat Spot	-
<b>Wheel</b>	-	-	Rim Run-out Wheel Unbalance	-	Rim Run-out Wheel Unbalance	-
	-	-	Rim Damage	-	Rim Damage	-
	-	-	Hub Transformation	-	Hub Transformation	-
	-	-	Rim Centering for Hub	-	Rim Centering for Hub	-
<b>Tire &amp; Rim</b>	-	-	Rim/Tire Matching	-	Rim/Tire Matching	-
	-	-	Loose Lugnut	-	Loose Lugnut	-
	-	-	Fitment	-	Fitment	-